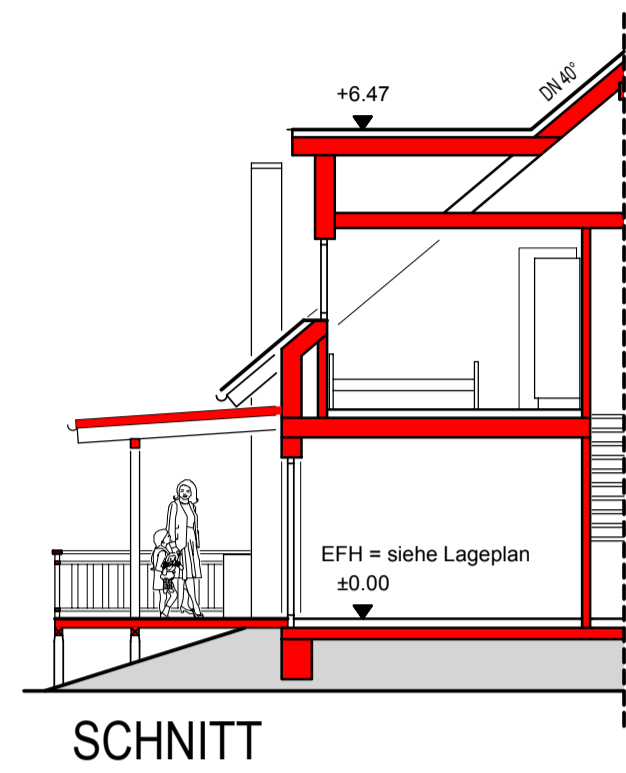
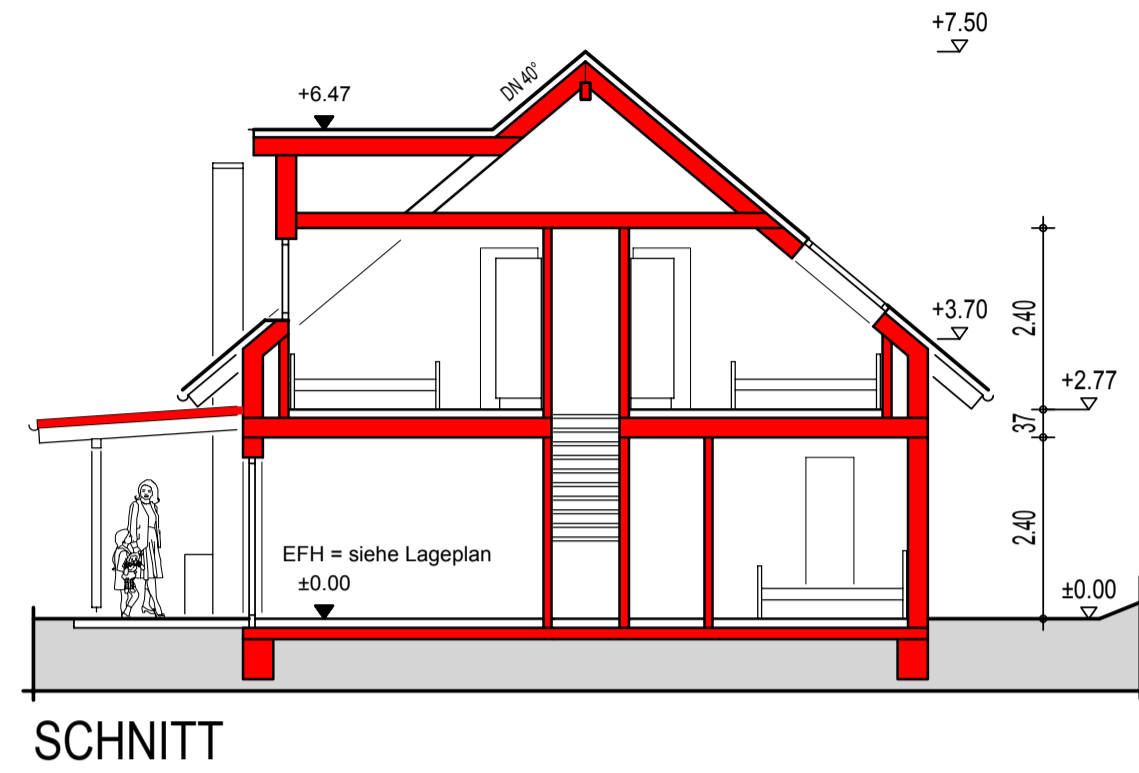


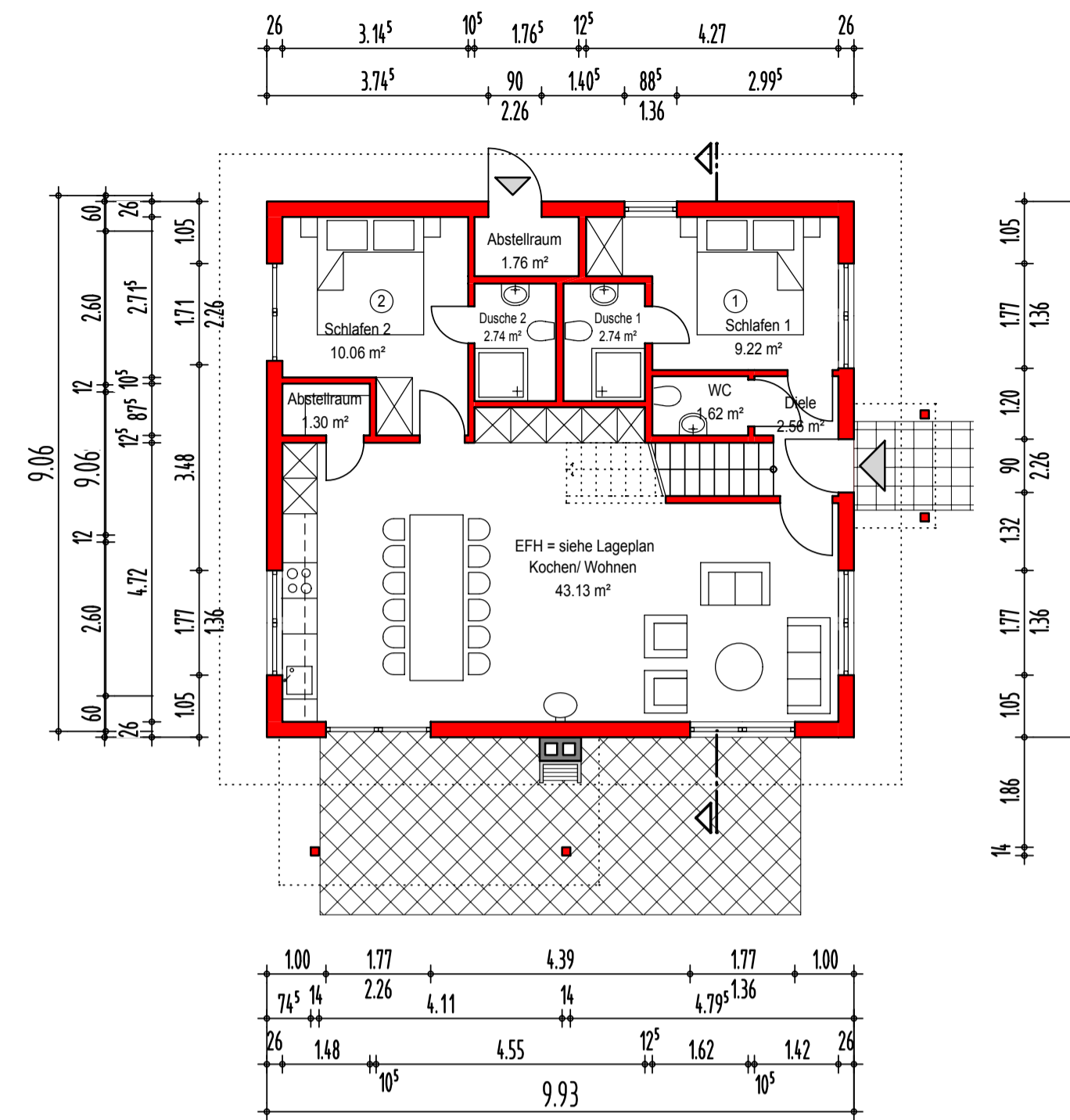
# Variante mit Veranda



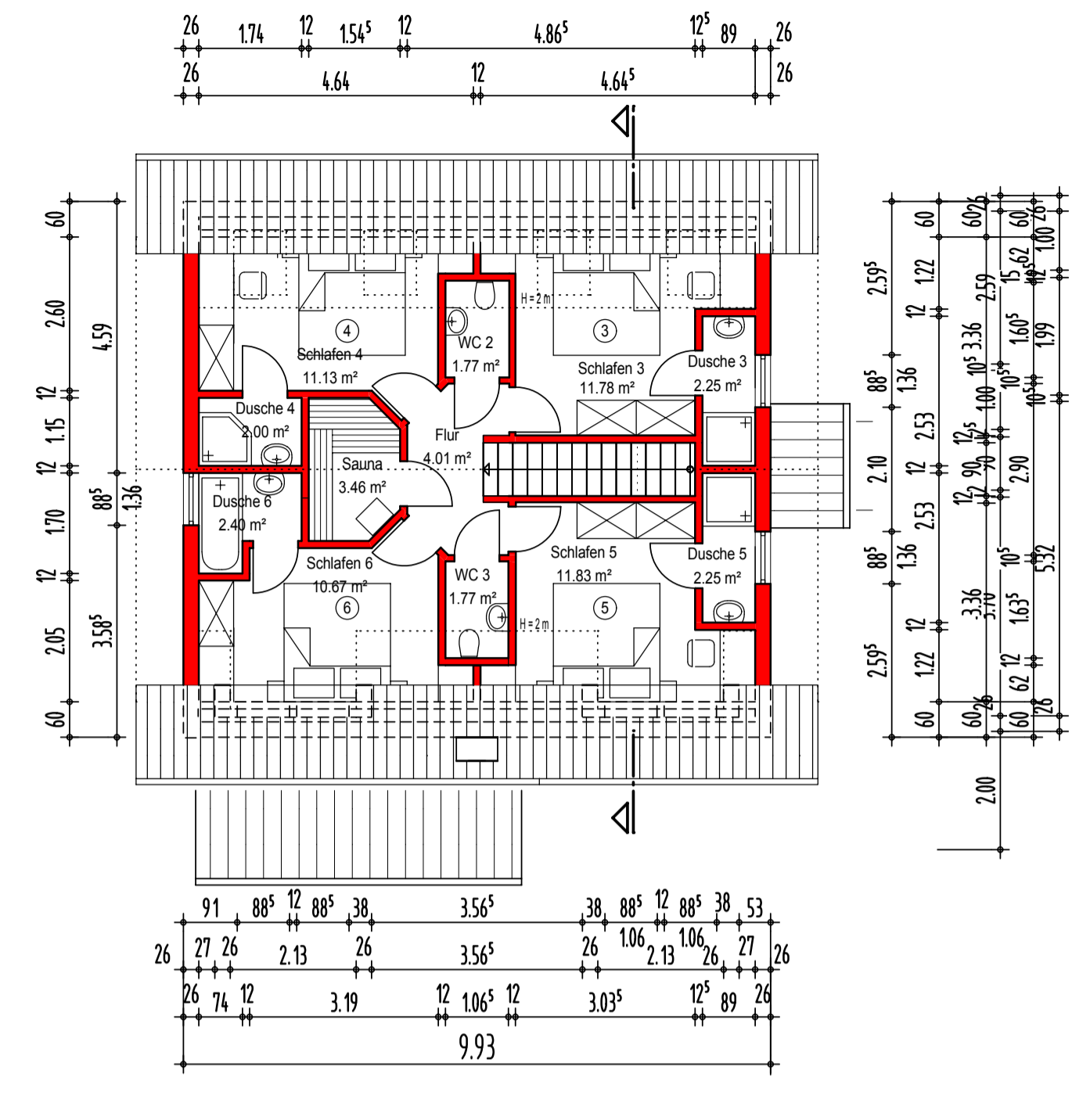
SCHNITT



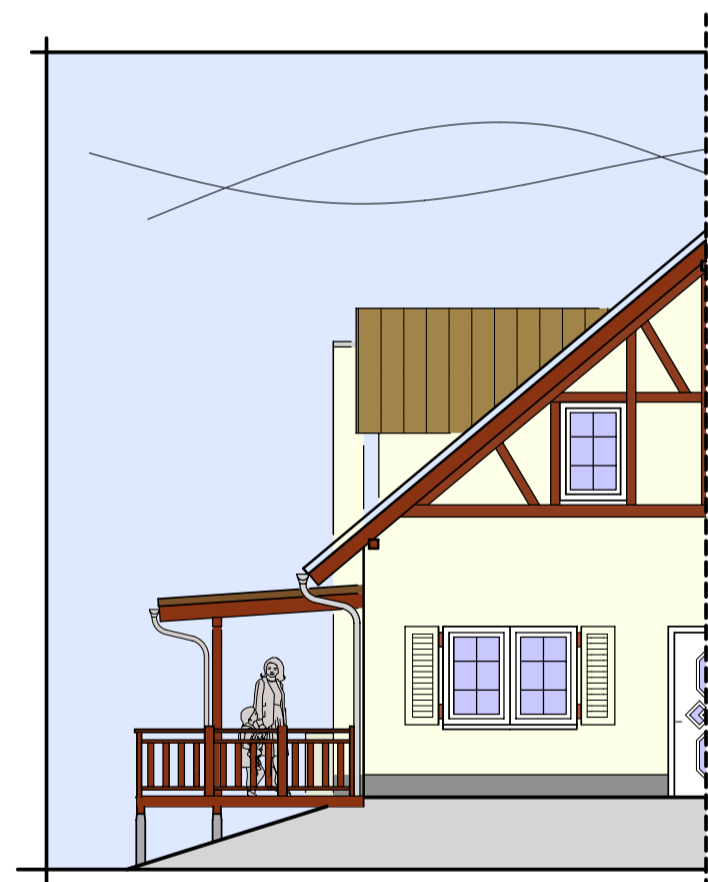
SCHNITT



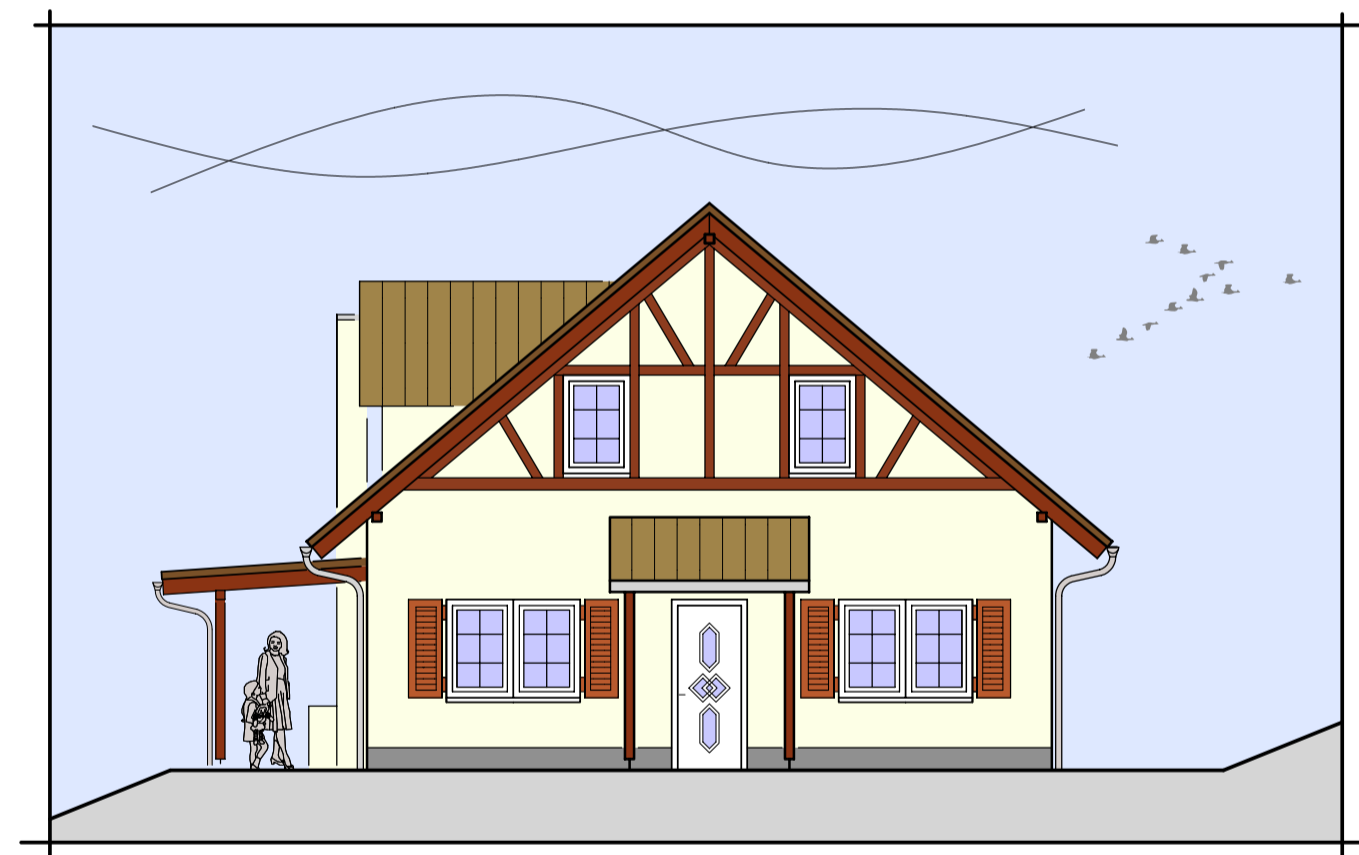
ERDGESCHOSS



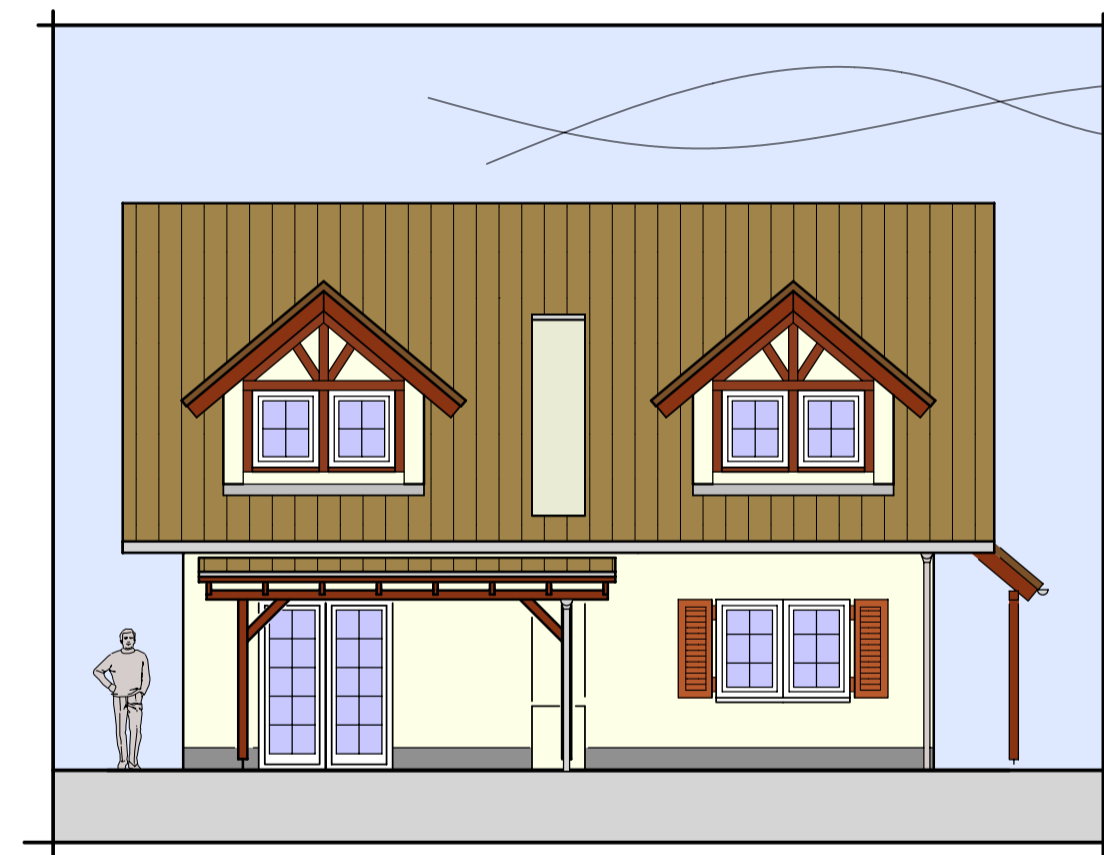
DACHGESCHOSS



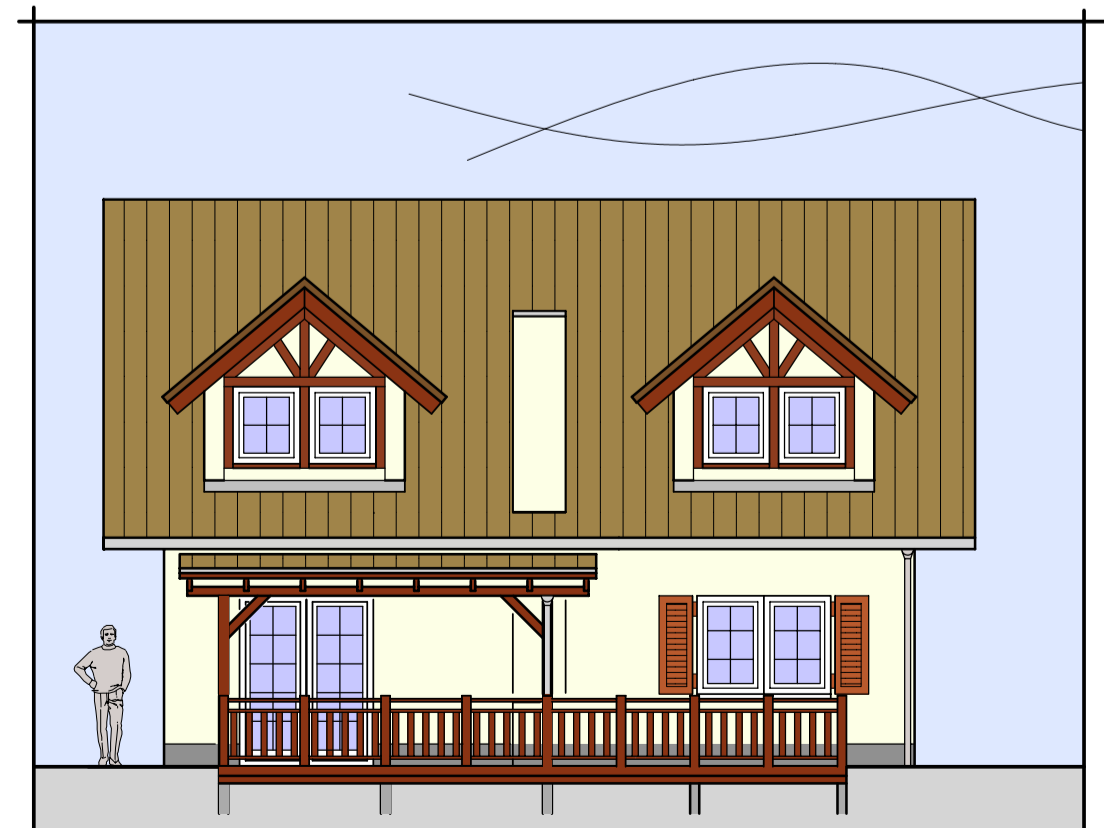
ANSICHT EINGANG



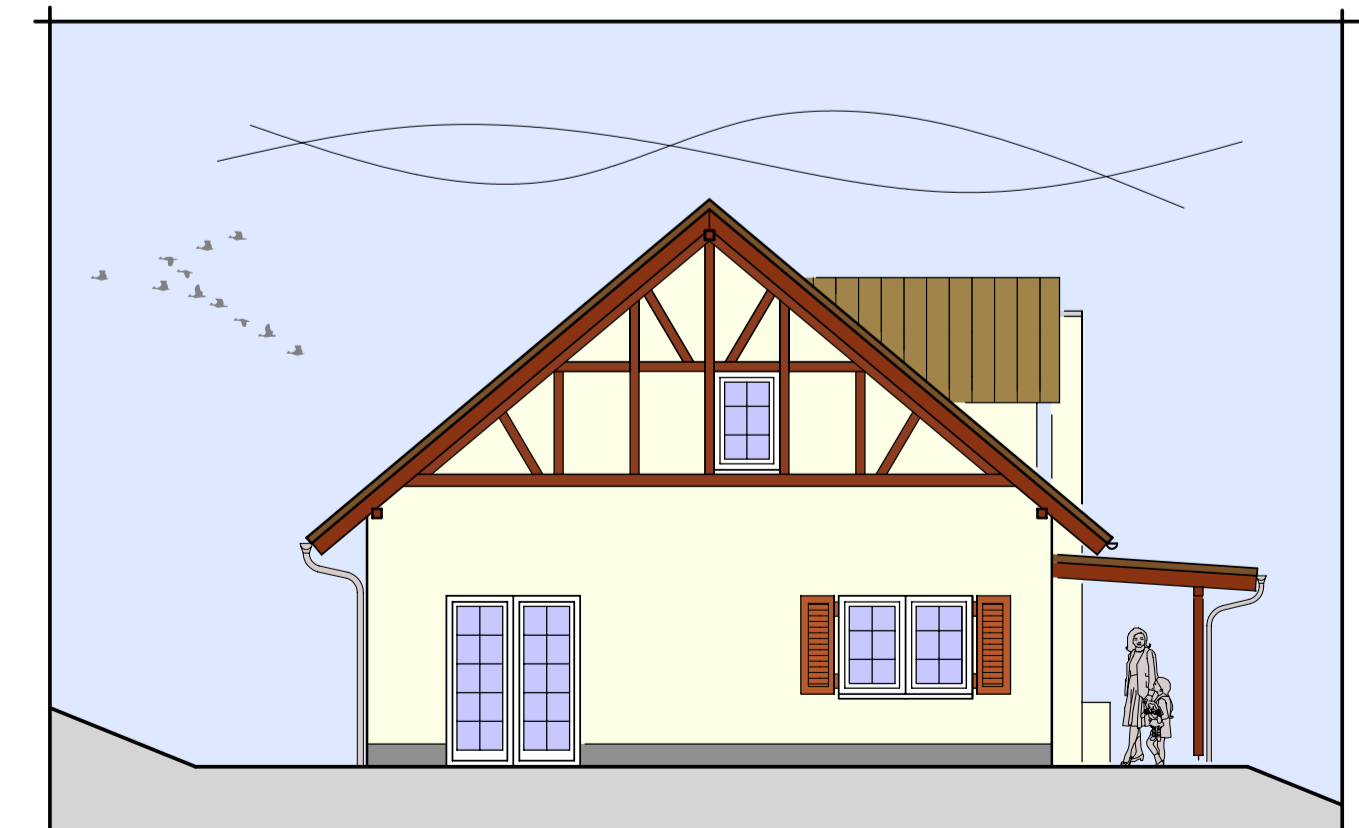
ANSICHT EINGANG



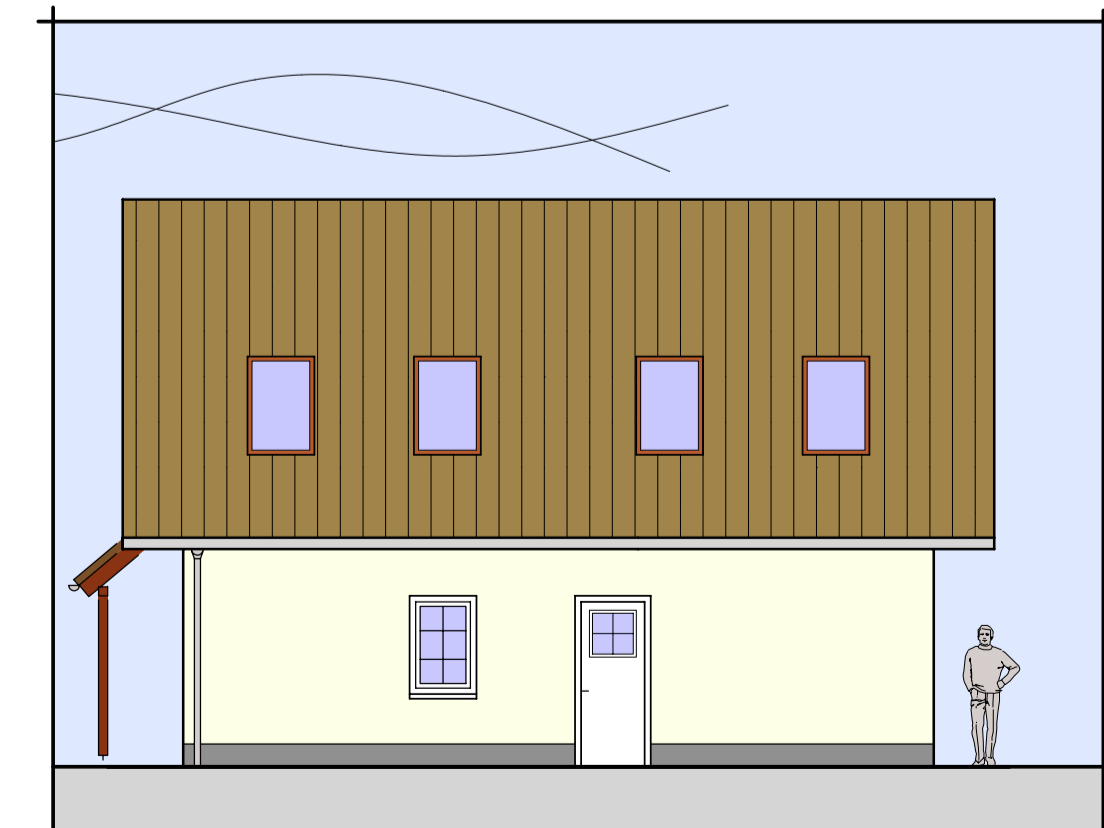
ANSICHT TERRASSE



ANSICHT TERRASSE



ANSICHT GIEBEL



ANSICHT RÜCKSEITE

Kölnener Straße 25 · D-53925 Kall  
 Telefon +49(0)241/9990-0 · Fax 9990-40  
 info@pe-becker.de · www.pe-becker.de

**PE BECKER GmbH**  
 Architekten + Ingenieure

**EURORESORTS** *UniMaison*

Bauvorhaben : Erweiterung Ferienpark Kronenburger See  
 Ferienpark Kronenburger See, Zum Kleebusch 15, 53945 Dahlem-Kronenburg

Sachbearbeiter: Scheer	Plan-Nr.	
Datum	Zeichen	Grundriss, Ansichten, Schnitt Haus Silvretta, 12 Personen
gezeichnet 13.08.2009	BS	
geändert	Maßstab: 1 : 100	
		36.125-H-